

Solidaridad



NICFI

Norway's
International Climate
and Forest Initiative

COFFEE OF THE FUTURE

Promoting deforestation-free coffee in Peru and Colombia



Coffee consumption is increasing, but coffee production is at risk. Climate change has reduced yields and has forced growers to seek new lands and adapt to a harsh reality. In the search of healthier soils, forest have been cleared, water has become scarce and soils have become eroded. Together with local growers, companies and governments, we are providing solutions to tackle these environmental challenges.



PHASE 1 (2013-2016) DOING **MORE** WITH LESS

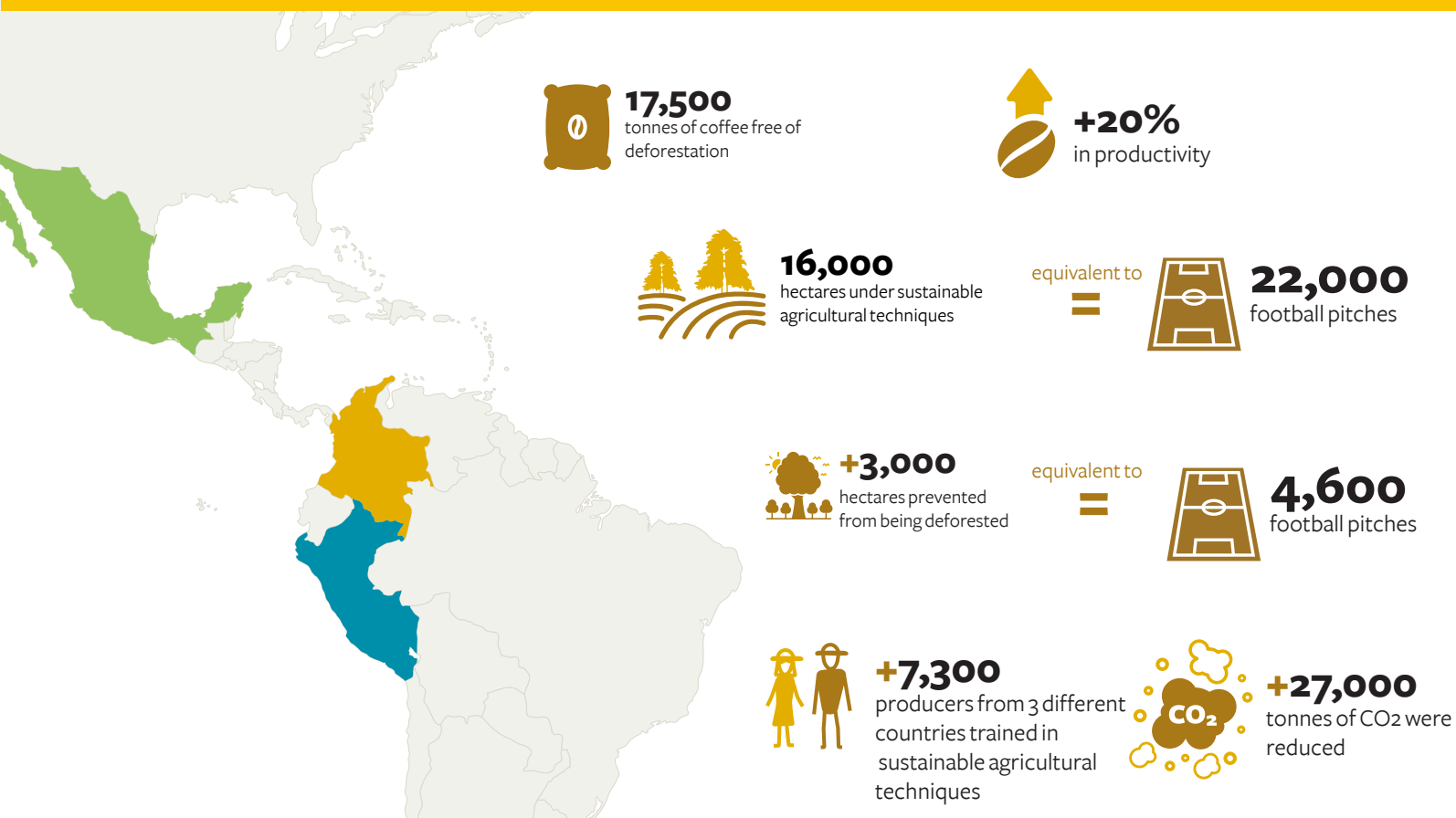
During its first stage, the climate-smart agriculture model implemented by Solidaridad proved to be successful. It made coffee more resilient to climate change, while increasing productivity, cup quality, and forest conservation.

CLIMATE-SMART COFFEE

- 1 Increases density of coffee bushes per hectare to make use of existing productive area avoiding deforestation.
- 2 Introduces shade trees to reduce erosion and generate additional income.
- 3 More efficient use of fertilizers to increase productivity and reduce costs.
- 4 More efficient post-harvest processes to reduce the use and contamination of water.

RESULTS

Trinational project implemented in Peru, Colombia and Mexico



PHASE 2 (2018-2021) IMPROVING THE COFFEE OF THE FUTURE, COFFEE FREE OF DEFORESTATION

COFFEE OF THE FUTURE is the second stage of our climate-smart coffee initiative. It started at the end of 2018 and aims to scale-up the model tested in the previous phase.

Work is done on three levels:

- 1 Climate smart agricultural practices adapted to specific coffee production models.
- 2 Public-private partnerships on national level to reduce deforestation and enable conditions for climate-smart coffee.
- 3 Climate smart coffee sourcing by international market players (roasters, traders, retailers).



Management of shade trees



Payments for environmental services

**click on the images
and check some
testimonials**

PROJECT GOALS

ACHIEVED 2019-20



+13,000
hectares under
climate-smart
production

10,350
78%
achieved



+6,000
producers adopting
climate-smart practices

5,083
producers adopted
climate-smart
practices
82%
achieved



224,965
new trees planted

BENEFITS FROM FARM TO CUP

Climate Smart Agriculture provides benefits for all stakeholders involved in the coffee supply chain: farmers, traders, roasters, service and input providers. It can reduce operational risks by securing future supply and avoiding the impact of coffee prices fluctuations. It improves consistency of quality and volume. It lowers reputational risks as it enables producers to comply with environmental legislation. Practical measurement tools give stakeholders a better insight on the environmental performance, the associated risks and costs in the supply chain.



ANNELOT VAN LEEUWEN
CORPORATE PARTNERSHIPS MANAGER
annelot.vanleeuwen@solidaridadnetwork.org

CARLOS ISAZA
COLOMBIA COFFEE
PROGRAMME MANAGER
carlos.isaza@solidaridadnetwork.org

ANDREA OLIVAR
STRATEGY AND QUALITY DIRECTOR
SOUTH AMERICA
andrea.olivar@solidaridadnetwork.org

ADA LIS ROSELL
PERU COUNTRY MANAGER
adalis.rosell@solidaridadnetwork.org

solidaridadnetwork.org/south-america